

# Product Features and Specifications

**FA5i-MR Infinity Series Winch - Capacity: 6,875 lbs (3125 kg)**

PFS-FA5i-MR-08222011

[www.ingersollrandproducts.com](http://www.ingersollrandproducts.com)

Ingersoll Rand's offering of dedicated and dual purpose (utility & personnel lifting) Man Rider™ winches are known worldwide as the standard for meeting the toughest personnel lifting requirements in the industry.

These rugged, oilfield tough winches have Type Approval or Independent Review certificates issued by the classification societies of ABS or DNV.

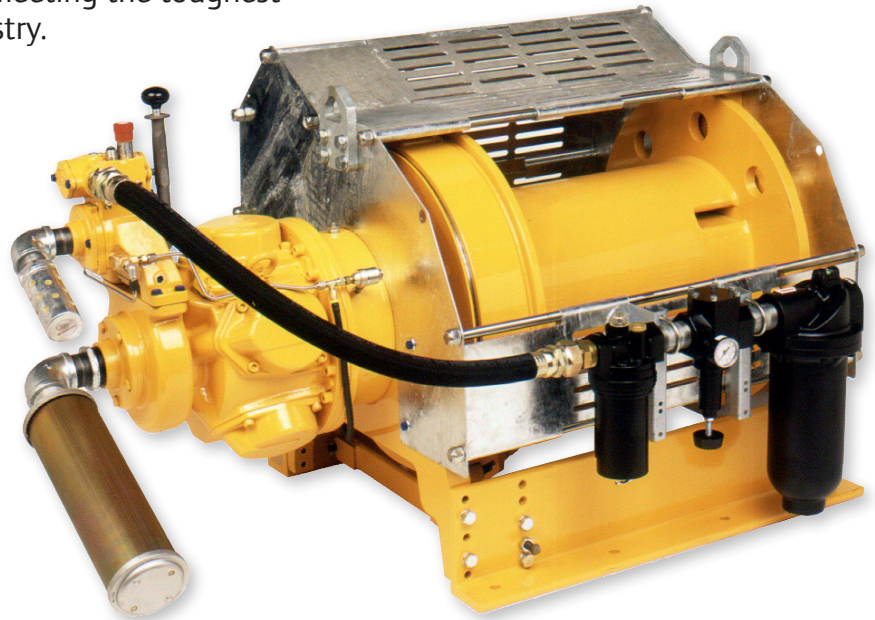
## Features

### Meeting world standards. Certified to those standards.

Drilling rigs and platforms are used all over the world and come under numerous and diverse regulations. Ingersoll Rand builds to regional and global specifications and our winches are certified by Det Norske Veritas (DNV), and the American Bureau of Shipping (ABS).

### Type Approval

A comprehensive design review by a third party addresses intended service, applications, ratings, design calculations, load bearing components, product specifications, and service restrictions or limitations. Plant surveys verify quality control procedures. A **Type Approval** certificate is then issued.



FA5i-MR with optional Overload, E-stop & Air Preparation Package

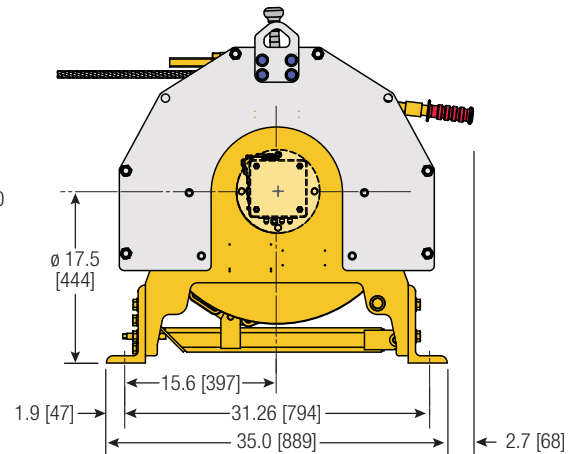
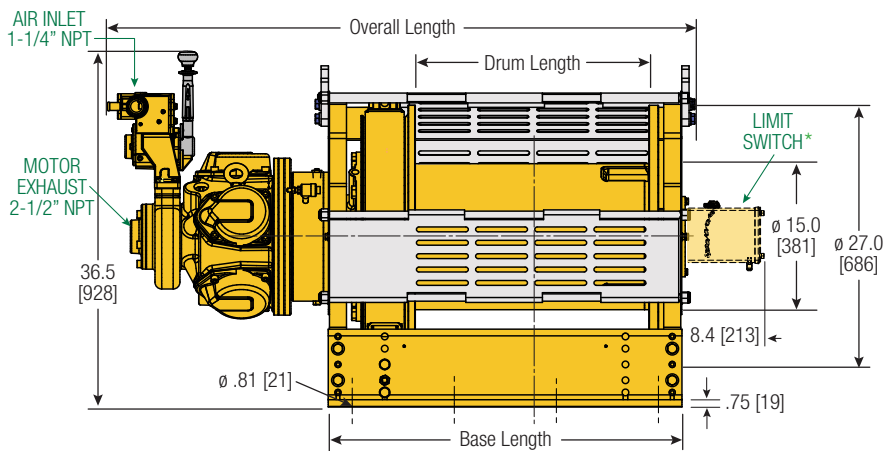
### What makes a winch a Man Rider™

Minimum design factors of 8:1. Dual Brakes. Drum Guards. Type Approval Certs and Data Books upon request (when requested at time of order). And, depending on where in the world it will be used, may include additional options such as: - CE certification, overload device, slack wire detector, limit switch, emergency shut-off, emergency lowering device and spooling device.

# Product Features and Specifications

## FA5i-MR Infinity Series Winch - Capacity: 6,875 lbs (3125 kg)

PFS-FA5i-MR-08222011



**FA5i-MR16MK1G**  
**FA5i-MR24MK1G**  
 with disc and manual brake

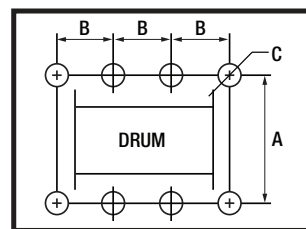
**NOTE:** \* Limit Switches standard on -CE versions only.

Dimensions shown are inches.  
 Dimensions in Brackets [ ] are mm.

Dimensions are subject to change.  
 Contact factory for certified drawings.

### Dimensions: FA5i-MR and Bolt Down Pattern

Drum Length		Overall Length		Base Length		Bolt Down "B" Dimension		Total Number of Holes	
		Drum & Disc Brakes		Drum & Disc Brakes		Drum & Disc Brakes		Drum & Disc Brakes	
in	mm	in	mm	in	mm	in	mm		
12	305	47.6	1209	24.3	617	7.5	191	6	
16	406	51.6	1311	28.3	719	9.0	191	6	
20	508	55.6	1412	32.3	820	10.0	159	8	
24	610	59.6	1514	36.3	922	10.5	197	8	
30	762	65.6	1666	42.3	1074	10.0	229	8	
36	914	71.6	1819	48.3	1227	11.0	229	10	



### Bolt Down Pattern

"A" = 31.25" [795mm]  
 "B" = See (above) chart  
 "C" = 0.81" [21mm]  
 Bolt Hole  
 Inside Diameter

### Man Rider™ Lift Ratings at 8:1 Design Factor (Performance at 6.3 Bar - 90 PSI at air inlet when winch is operating)

Model #	hp	Top Layer		First Layer		Average Air Consumption <sup>(1)</sup>	Sound Level <sup>(2)</sup>	Inlet Size	Exhaust Size	Net Weight						
		Rated Capacity	Speed	Speed at Rated Capacity	Stall Pull											
		lbs	kg	ft/min	m/min	ft³/min	m³/min	NPT	NPT	lbs						
FA5i-MR24MK1G	25	6,870	3123	75	23	61	19	23,594	10725	700	20	97	1-1/4"	2-1/2"	2,000	907

### Utility Lift Ratings at 5:1 Design Factor (Performance at 6.3 Bar - 90 PSI at air inlet when winch is operating)

FA5i-MR24MK1G	25	11,000	5000	54	16	51	16	23,594	10725	700	20	97	1-1/4"	2-1/2"	2,000	907
---------------	----	--------	------	----	----	----	----	--------	-------	-----	----	----	--------	--------	-------	-----

(1) Average Air Consumption is at rated load and speed at top layer (2) With optional muffler

### Drum Wire Rope Storage Capacity

Imperial Series	Rated capacity lbs	Rope Diameter in	Min Break* Strength lbs	Accumulated rope capacity in feet / number of layers												
				1	2	3	4	5	6	7	8					
FA5i-MR16	6,870	3/4	54,960	84	175	274	381	495	617	746	883					
FA5i-MR24	6,870	3/4	54,960	128	267	418	581	755	940	1,138	1,346					
FA5i-MR30	6,870	3/4	54,960	161	336	526	730	949	1,183	1,431	1,694					
FA5i-MR36	6,870	3/4	54,960	194	405	634	880	1,144	1,426	1,725	2,041					

Metric Series	kgs	mm	kgs	Accumulated rope capacity in meters / number of layers												
				1	2	3	4	5	6	7	8					
FA5i-MR16	3123	19	24984	26	53	84	116	151	188	227	269					
FA5i-MR24	3123	19	24984	39	81	127	177	230	287	347	410					
FA5i-MR30	3123	19	24984	49	102	160	223	289	361	436	516					
FA5i-MR36	3123	19	24984	59	123	193	268	349	435	526	622					

\* NOTE:

The Minimum Required Breaking Strength for the wire rope needs to be the Rated Capacity multiplied by the Design Factor.

Example: for the FA5i-MR16 (with a 8:1 Design Factor) 6,870 x 8 = 54,960 lbs.