

Product Features and Specifications

FA2i Infinity Series Winch - Capacity: 4,400 lbs (2000 kg)

PFS-FA2i-08222011

Rugged Compact and Versatile Design

- Meets ANSI / ASME B30.7
- 5:1 design factor at rated load
- Top layer rated line pull
- "Lift to shift" winch mounted lever throttle
- Minimum 18:1 drum diameter to wire rope diameter ratio
- Compact gearbox-in-drum design
- Standard design temperature range is 0°C through 60°C
- Group of mechanism as per FEM: 5m
- Pre-certified lifting lugs

Suitable for Hazardous Explosion Proof Environments

- Flameproof by design. Air motors (unlike electric motors) are inherently spark resistant.
- ATEX classification (as per directive EC 94/9/EEC). CE compliant models marked EX II 2 GD c 200°C X

Powerful Radial Piston Air Motor

- Positive starting torque
- Infinitely variable speeds with precision spotting control
- Superior reliability in harsh environments

Brake Systems

- Manual drum brake standard
- Optional auto drum brake and /or auto disc available
- Fully enclosed automatic oil bath "wet" disc brake sealed against moisture and contaminants
- **Ingersoll Rand recommends the use of automatic brakes whenever a winch is used for lifting**

CE compliant versions provided with:

- Drum guard
- Overload protection (preset regulator)
- Emergency stop
- Muffler
- Automatic brake
- Limit switches
- CE documentation



FA2i with optional Auto Disc Brake, Drum Guard and Press Roller

Options and Accessories

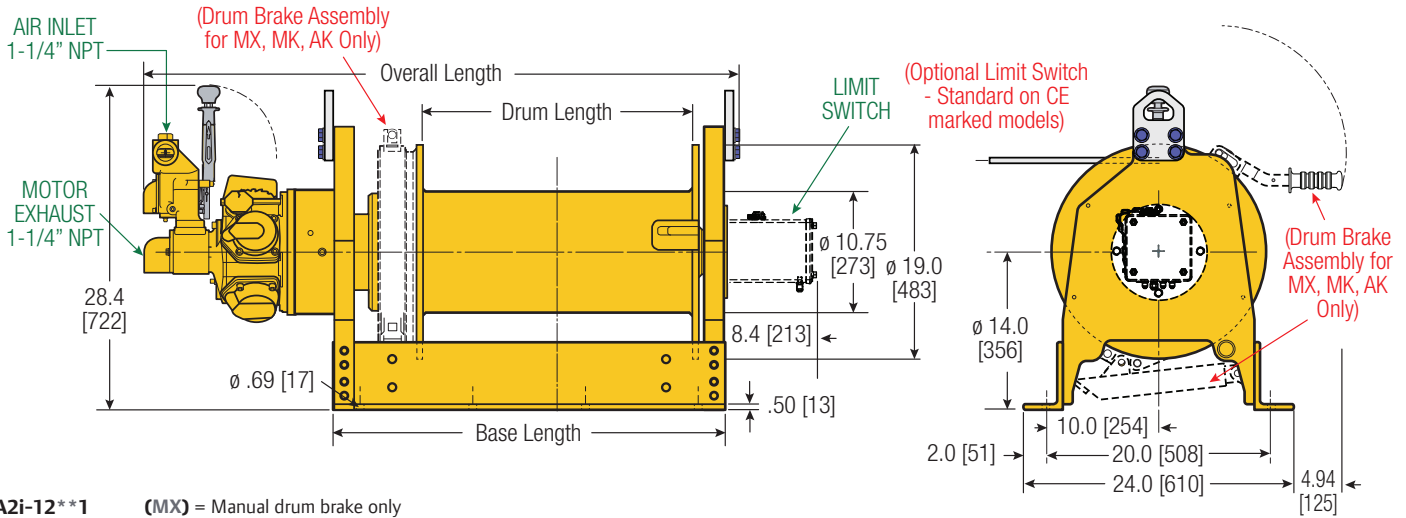
- DNV & ABS Type Approved models available
- Low temperature versions
- Overload and E-stop control system
- Remote controls
- Limit switches
- Tensioning manifold
- Drum guards*
- Grooved drums
- Drum divider flanges
- Drum locks
- Spooling devices
- Marine paint systems
- Air line accessories

* Ingersoll Rand recommends using Drum Guards with all winches to prevent inadvertent contact with winch moving parts

Product Features and Specifications

FA2i Infinity Series Winch - Capacity: 4,400 lbs (2000 kg)

PFS-FA2i-08222011



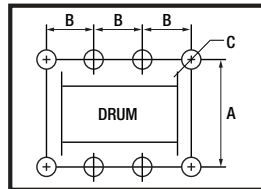
Dimensions shown are inches. Dimensions in Brackets [] are mm. Dimensions are subject to change. Contact factory for certified drawings.

Dimensions: FA2i and Bolt Down Pattern

Drum Length		Overall Length						Base Length				Bolt Down "B" Dimension			
		Drum Brake Only (MX)		Disc Brake Only (XK)		Both Brakes (MK)		Disc Brake Only (XK)		Drum Only (MX) & Both Brakes (MK)		Disc Brake Only (XK)		Drum Only (MX) & Both Brakes (MK)	
in	mm	in	mm	in	mm	in	mm	in	mm	in	mm	in	mm	in	mm
12	305	37.2	945	38.1	968	40.8	1036	20.11	511	22.8	579	7.5	191	9.0	229
16	406	41.2	1046	42.1	1069	44.8	1138	24.11	612	26.8	681	6.3	159	7.5	191
20	508	45.2	1148	46.1	1171	48.8	1240	28.11	714	30.8	782	7.8	197	9.0	229
24	610	49.2	1250	50.1	1273	52.8	1341	32.11	816	34.8	884	9.0	229	10.0	254

Bolt Down Pattern

- "A" = 20" [508mm]
- "B" = See above chart
- "C" = 0.69" [18mm]
- Bolt Hole Inside Diameter



Drum Length		Total Number of Holes	
in	mm	Disc Brake Only (XK)	Drum Only (MX) & Both Brakes (MK)
12	305	6	6
16	406	8	8
20	508	8	8
24	610	8	8

Lift Ratings at 5:1 Design Factor (Performance at 6.3 Bar - 90 PSI at air inlet when winch is operating)

Model #	hp	Top Layer		First Layer				Average Air Consumption ⁽¹⁾	Sound Level ⁽²⁾	Inlet Size	Exhaust Size	Net Weight	
		Capacity	Speed	Speed at		Stall Pull	lbs					kg	
		lbs	kg	ft/min	m/min	ft/min	m/min	ft ³ /min	m ³ /min	NPT	NPT	lbs	kg
FA2i	9	4,400	2000	51	16	55	17	280	8	1-1/4"	1-1/4"	850	386

(1) Average Air Consumption is at rated load and speed at top layer (2) With optional muffler

Drum Wire Rope Storage Capacity

Imperial Series	Rated capacity lbs	Rope Diameter in	Min Break* Strength lbs	Accumulated rope capacity in feet / number of layers							
				1	2	3	4	5	6	7	8
FA2i-12	4,400	1/2	22,000	66	141	220	305	396	492	594	702
		5/8	22,000	54	114	180	251	328	410		
FA2i-16	4,400	1/2	22,000	91	190	297	411	534	663	801	946
		5/8	22,000	73	154	243	339	443	554		
FA2i-24	4,400	1/2	22,000	138	289	450	624	809	1,006	1,214	1,435
		5/8	22,000	111	234	369	515	673	843		

Metric Series	kgs	mm	kgs	Accumulated rope capacity in meters / number of layers							
				1	2	3	4	5	6	7	8
FA2i-12	2000	13	10000	20	42	66	91	119	147	178	210
		16	10000	16	34	54	76	99	124		
FA2i-16	2000	13	10000	27	57	89	123	160	199	240	284
		16	10000	22	47	73	103	134	168		
FA2i-24	2000	13	10000	41	86	135	187	242	301	364	430
		16	10000	34	71	112	156	204	255		

*** NOTE:**

The Minimum Required Breaking Strength for the wire rope needs to be the Rated Capacity multiplied by the Design Factor. Example: for the FA2i (with a 5:1 Design Factor) 4,400 x 5 = 22,000 lbs.