

Product Features and Specifications

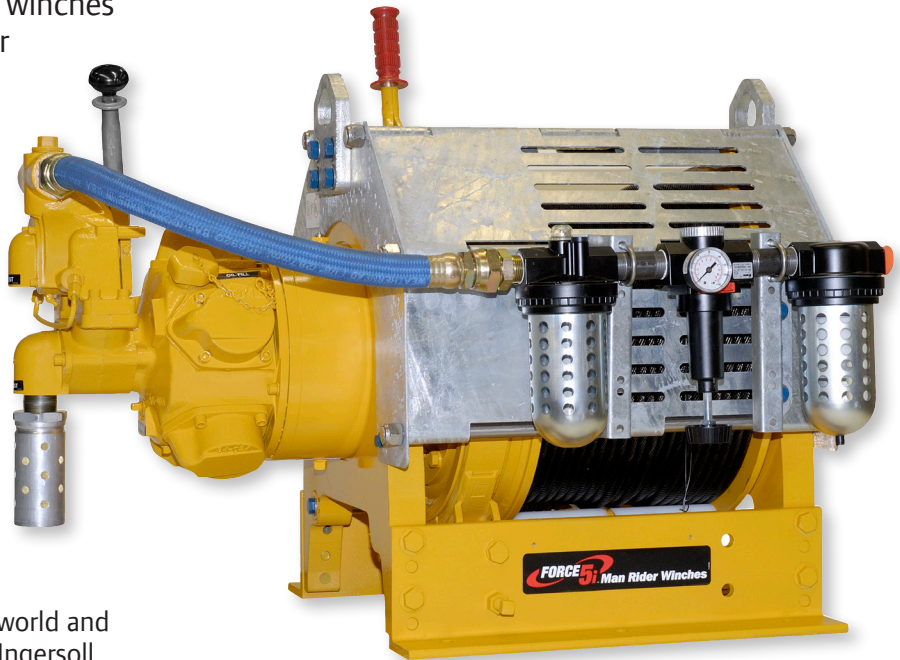
FA2i-MR Infinity Series Winch - Capacity: 3,180 lbs (1 445 kg)

PFS-FA2i-MR-08222011

www.ingersollrandproducts.com

Ingersoll Rand's offering of dedicated and dual purpose (utility & personnel lifting) Man Rider™ winches are known worldwide as the standard for meeting the toughest personnel lifting requirements in the industry.

These rugged, oilfield tough winches have Type Approval or Independent Review certificates issued by the classification societies of ABS or DNV.



Features

**Meeting world standards.
Certified to those standards.**

Drilling rigs and platforms are used all over the world and come under numerous and diverse regulations. Ingersoll Rand builds to regional and global specifications and our winches are certified by Det Norske Veritas (DNV), and the American Bureau of Shipping (ABS).

Type Approval

A comprehensive design review by a third party addresses intended service, applications, ratings, design calculations, load bearing components, product specifications, and service restrictions or limitations. Plant surveys verify quality control procedures. A **Type Approval** certificate is then issued.

FA2i-MR with optional
Air Preparation Package

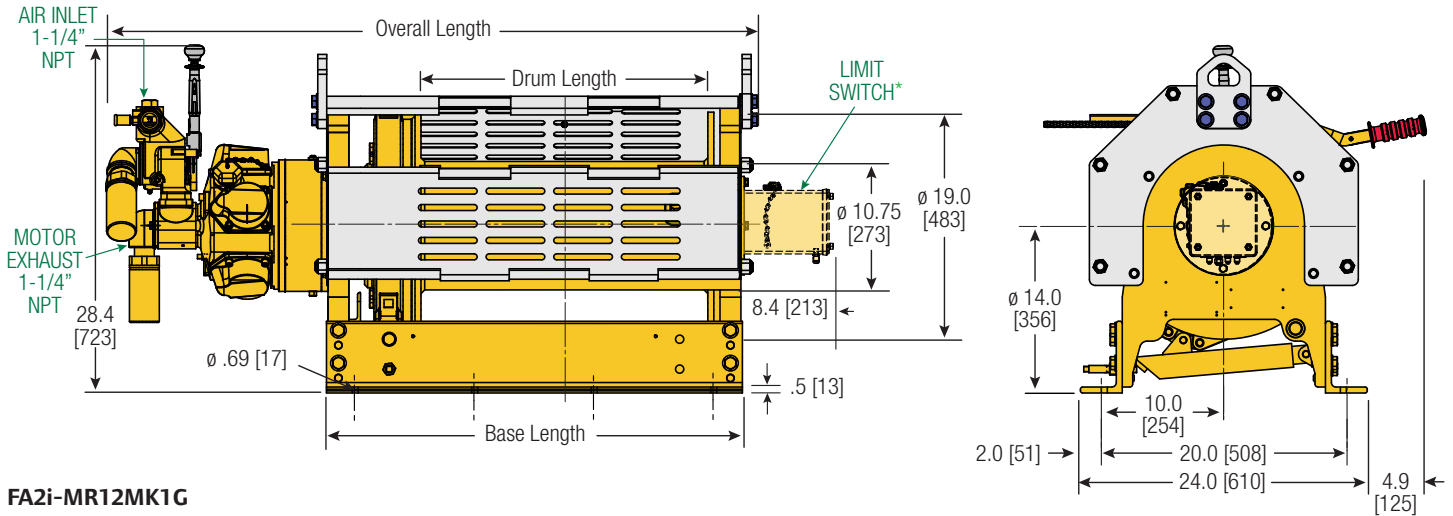
What makes a winch a Man Rider™

Minimum design factors of 8:1. Dual Brakes. Drum Guards. Type Approval Certs and Data Books upon request (when requested at time of order). And, depending on where in the world it will be used, may include additional options such as: - CE certification, overload device, slack wire detector, limit switch, emergency shut-off, emergency lowering device and spooling device.

Product Features and Specifications

FA2i-MR Infinity Series Winch - Capacity: 3,180 lbs (1 445 kg)

PFS-FA2i-MR-08222011



FA2i-MR12MK1G
FA2i-MR24MK1G
with disc and manual brake

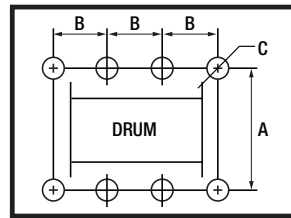
NOTE: * Limit Switches standard on -CE versions only.

Dimensions shown are inches.
Dimensions in Brackets [] are mm.

Dimensions are subject to change.
Contact factory for certified drawings.

Dimensions: FA2i-MR and Bolt Down Pattern

Drum Length		Overall Length		Base Length		Bolt Down "B" Dimension		Total Number of Holes	
		Drum & Disc Brakes		Drum & Disc Brakes		Drum & Disc Brakes		Drum & Disc Brakes	
in	mm	in	mm	in	mm	in	mm		
8	203	36.8	935	18.8	478	7.0	178	6	
12	305	40.8	1036	22.8	579	9.0	191	6	
16	406	44.8	1138	26.8	681	7.5	159	8	
20	508	48.8	1240	30.8	782	9.0	197	8	
24	610	52.8	1341	34.8	884	10.0	229	8	



Bolt Down Pattern

- "A" = 20" [508mm]
- "B" = See (Left) chart
- "C" = 0.69" [18mm]
- Bolt Hole Inside Diameter

Man Rider™ Lift Ratings at 8:1 Design Factor (Performance at 6.3 Bar - 90 PSI at air inlet when winch is operating)

Model #	hp	Top Layer				First Layer				Average Air Consumption ⁽¹⁾	Sound Level ⁽²⁾	Inlet Size	Exhaust Size	Net Weight		
		Rated Capacity	Speed	Rated Capacity	Stall Pull	Speed at	Stall Pull	ft ³ /min	m ³ /min						db(A)	NPT
FA2i-MR24MK1	9	3,180	1445	75	23	68	21	9,139	4154	280	8	87	1-1/4"	1-1/4"	925	420

Utility Lift Ratings at 5:1 Design Factor (Performance at 6.3 Bar - 90 PSI at air inlet when winch is operating)

FA2i-MR24MK1	9	4,400	2000	51	16	55	17	9,139	4154	280	8	87	1-1/4"	1-1/4"	925	420
--------------	---	-------	------	----	----	----	----	-------	------	-----	---	----	--------	--------	-----	-----

(1) Average Air Consumption is at rated load and speed at top layer (2) With optional muffler

Drum Wire Rope Storage Capacity

Imperial Series	Rated capacity lbs	Rope Diameter in	Min Break* Strength lbs	Accumulated rope capacity in feet / number of layers							
				1	2	3	4	5	6	7	8
FA2i-MR12	3,180	1/2	25,440	66	141	220	305	396	492	594	702
FA2i-MR16	3,180	1/2	25,440	91	190	297	411	534	663	801	946
FA2i-MR24	3,180	1/2	25,440	138	289	450	624	809	1,006	1,214	1,435

Metric Series	kgs	mm	kgs	Accumulated rope capacity in meters / number of layers							
				1	2	3	4	5	6	7	8
FA2i-MR12	1445	13	11560	20	42	66	91	119	147	178	210
FA2i-MR16	1445	13	11560	27	57	89	123	160	199	240	284
FA2i-MR24	1445	13	11560	41	86	135	187	242	301	364	430

* NOTE:

The Minimum Required Breaking Strength for the wire rope needs to be the Rated Capacity multiplied by the Design Factor.

Example: for the FA2i-MR12 (with a 8:1 Design Factor) 3,180 x 8 = 25,440 lbs.