

# Product Features and Specifications

**FA150KGi Infinity Series Winch - Capacity: 330 lbs (150 kg)**

PFS-FA150-08222011

[www.ingersollrandproducts.com](http://www.ingersollrandproducts.com)

FA150KGi Man Rider™ winches have been designed to meet the requirements of the Oil Exploration Industry, particularly those specifications of the Norwegian Petroleum Directorate and DNV. They have Design Approval by Det Norske Veritas (DNV) and the American Bureau of Shipping (ABS). Fully Type Approved units available by ordering "N4" (ABS) or "N5" (DNV) options.

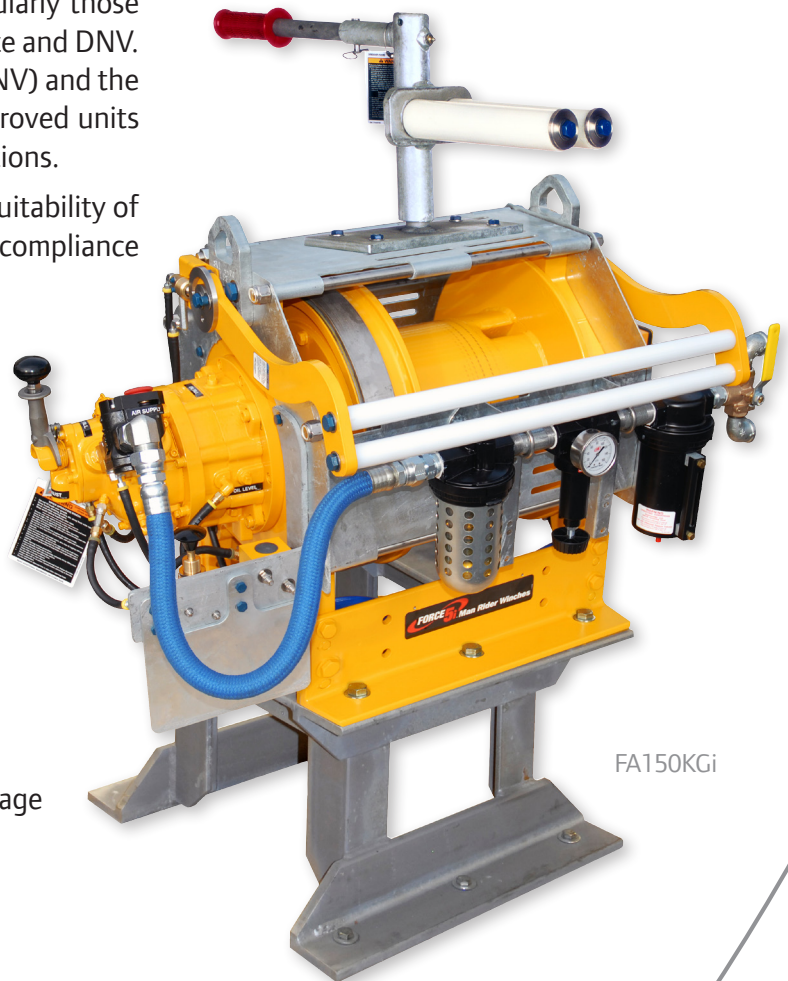
It remains the user's responsibility to determine the suitability of this product for any particular use and to check for compliance with applicable regulations.

## Standard Features

- Automatic internal disc brake
- Automatic drum brake
- Slack rope detector
- Emergency stop & Overload limiter
- Drum guard
- Press roller
- Standard design temperature is -20° C
- Emergency lowering device
- Lift to shift lever throttle
- Rotary limit switch
- Filter, Regulator, Lubricator - air preparation package
- Muffler
- 10:1 design factor
- 18:1 D/d ratio on wire rope
- Marine 812 finish paint "P" standard
- CE compliance

## Options

- Type Approved models available certified to:
  - » DNV-OS-E101 Drilling Plant - October 2009, or
  - » ABS Certification of Drilling Systems - March 2011
- Manual rope guide
- Marine paint systems
- Pedestal base (pictured)
- Stainless steel hoses
- Emergency lowering system

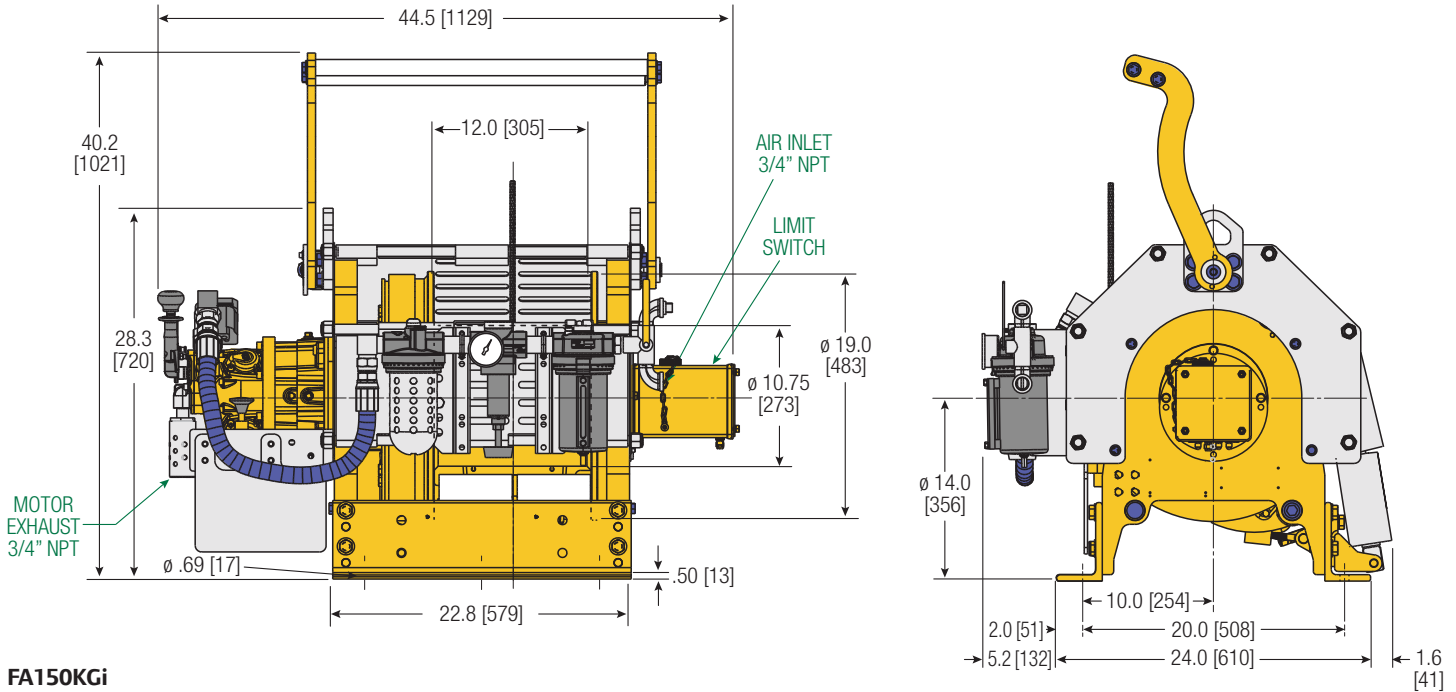


FA150KGi

# Product Features and Specifications

## FA150KGi Infinity Series Winch - Capacity: 330 lbs (150 kg)

PFS-FA150-0822011

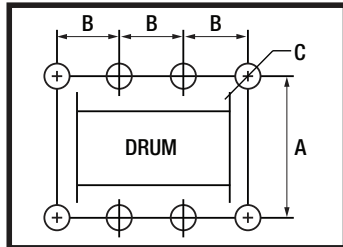


FA150KGi

### FA150KGi-MR Bolt Down Pattern

#### Bolt Down Pattern

- "A" = 20.0" [508mm]
- "B" = 9.0" [229]
- "C" = 0.69" [18mm]
- Bolt Hole Inside Diameter
- Total Number of Holes**
- 6



Dimensions shown are inches.  
Dimensions in Brackets [ ] are mm.

Dimensions are subject to change.  
Contact factory for certified drawings.

### Man Rider™ Lift Ratings at 10:1 Design Factor (Performance at 6.3 Bar - 90 PSI at air inlet when winch is operating)

Model #	hp	Top Layer				First Layer		Average Air Consumption <sup>(1)</sup>	Sound Level <sup>(2)</sup>	Inlet Size	Exhaust Size	Net Weight	
		Rated Capacity	Speed	Speed	Rated Capacity	ft/min	m/min					lbs	kg
		lbs	kg	ft/min	m/min	ft/min	m/min	ft <sup>3</sup> /min	m <sup>3</sup> /min	NPT	NPT	lbs	kg
FA150KGiMR12A1-CE	2	330	150	95	29	95	29	50	14	3/4"	3/4"	750	340

- (1) Average Air Consumption is at rated load and speed at top layer
- (2) With muffler

### Standard Drum Wire Rope Storage Capacity

Capacities represent tightly wound wire rope. Recommended working capacity is 80% of values shown.

Imperial														
Series	Rated capacity	Rope Diameter	Min Break* Strength	Accumulated rope capacity in feet / number of layers										
				1	2	3	4	5	6	7	8	9	10	11
FA150KGi-12	330	7/16	3,300	77	161	249	344	445	551	663	780	904		

Metric														
Series	kgs	mm	kgs	Accumulated rope capacity in meters / number of layers										
				1	2	3	4	5	6	7	8	9	10	11
FA150KGi-12	150	10	1500	26	54	84	115	148	183	220	259	299	341	385

\* NOTE: The Minimum Required Breaking Strength for the wire rope needs to be the Rated Capacity multiplied by the Design Factor.  
Example: for the FA150KGi (with a 10:1 Design Factor) 330 x 10 = 3,300 lbs.