

Case Study

Biogas Process Blowers



Cristanol Bazancourt—France

2009

One positive displacement blower in package BSF1.6 SCC with enclosure is used for the recovery of biogas for burner feeding.

Customer Overview

Cristanol is the first French manufacturing unit of bio-ethanol on the double sector beets and cereal (wheat).

Solution

We installed one positive displacement blower in package BSF1.6 SCC with enclosure with flow variation through frequency converter.

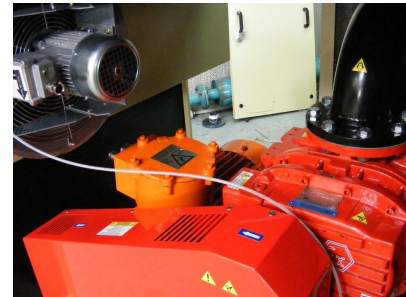
Gas : Biogas

Inlet pressure: 1013 mbar Abs

Outlet Pressure: 1513 mbar Abs

Differential Pressure : 500 mbar

Flow : 563 m³/h



Ingersoll Rand Industrial Technologies provides products, services and solutions that enhance our customers' energy efficiency, productivity and operations. Our diverse and innovative products range from complete compressed air systems, tools and pumps to material and fluid handling systems and environmentally friendly micro turbines. We also enhance productivity through solutions created by Club-Car® the global leader in golf and utility vehicles for businesses and individuals.