

IHP100 & IHP128 – Hygienic rotary pumps for liquid road tankers



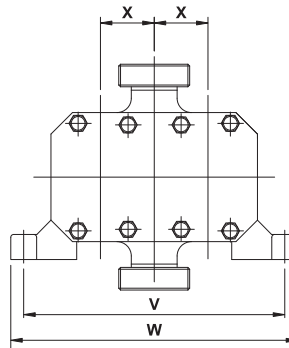
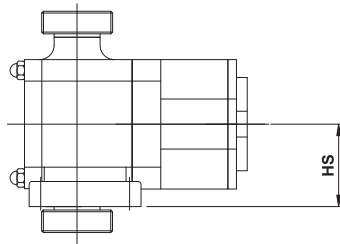
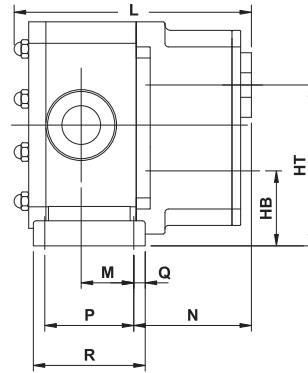
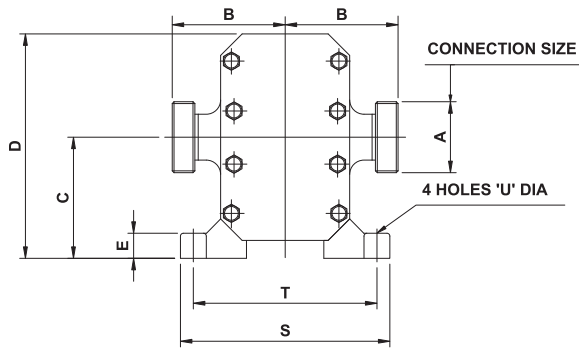
Stainless steel rotary tri lobe road tanker pumps. Applications include corn syrup, vegetable oils, dairy products, sugars, fruit juices, starches, chemicals and many more. 3A 02-10 validated. Also available on application with ATEX or FDA certification.



Highlights

- Universal and compact mounting.
- Lightweight to increase payload yet durable to withstand tough road tanker environments and operating conditions.
- High efficiency with full bore port connections, minimizing NPSHr, maximizing flow potential & ability to pump highly viscous products: Reducing discharge time to a minimum.
- Port size, thread & orientation options to suit your exact needs.
- Competitor interchangeable mounting plate enabling low switching costs.
- Wide range of front loading seals available for ease of maintenance.
- Bi directional.

IHP100 & IHP128 – Hygienic pumps for conveying of liquid material

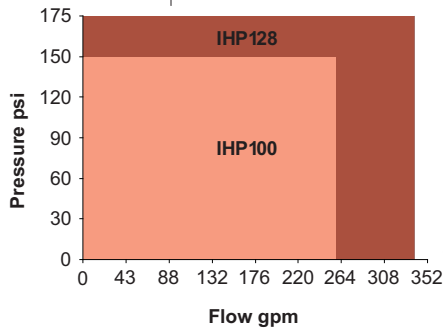


B1: applies for all threaded connections (incl. ACME & Triclamp) except BSPT & NPT.
B2: applies for BSPT & NPT thread connections.

Disclaimer: Dimensions are for guidance only. Please refer to our technical office if a certified drawing is required.

Dimensions (in)

	IHP 100		IHP 128	
A	2.0	3.2	3.2	3.9
B1	4.6		5.2	
B2	5.5	5.9	6.4	7.0
C	5.6		6.2	
D	10.8		12.0	
E	0.9		1.1	
HB	3.5		3.8	
HS	3.5		3.9	
HT	7.7		8.5	
L	11.8		12.2	
M	1.7		2.4	
N	6.9		6.3	
P	3.5		4.9	
Q	0.6		0.6	
R	4.6		6.0	
S	8.7		9.6	
T	7.7		8.4	
U	0.4		0.5	
V	12.0		13.0	
W	13.0		14.1	
X	2.1		2.4	



Your advantages

- Low maintenance: *Fit and forget!*
- Optimized seal design and positioning enables the operator to clean the pump quickly and easily without the need for special tools.
- Regional support with our full & comprehensive well positioned partner network.
- 316L product wetted parts for peace of mind for hygienic compatibility.
- Suitable for both CIP/SIP and COP (Clean Out of Place).
- Pumps can be driven by either a close coupled hydraulic motor or via electric motor.

Operating range

Parameters	Unit	IHP100	IHP128
Displacement	gal/rev	0.26	0.34
Max. capacity	gpm	255	340
Max. pressure	psi	145	175
Max. speed	rpm	1,000	1,000
Weight	lb	108	147
Max. port Ø	in	3"	4"
Porting available	in	3"	3"/4"

GHH RAND/OEM Systems
Ingersoll Rand Industrial Technologies
800-B Beaty Street
Davidson, NC 28036, USA
Tel. 704 655 4715 • Fax 704 655 4725
info_ghh-rand@irco.com • www.ghh-rand.com

