



IHP100 & IHP128 – Hygienic rotary pumps for liquid road tankers

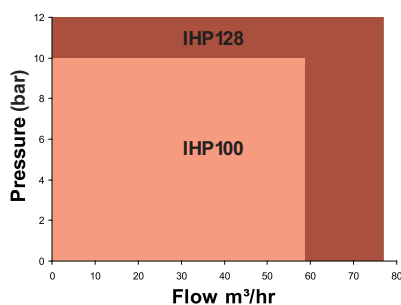
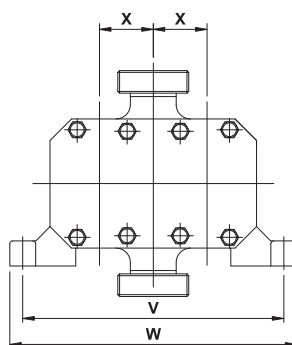
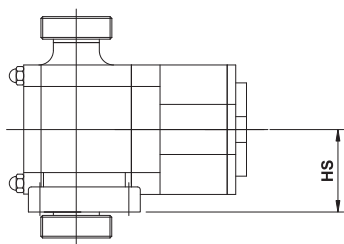
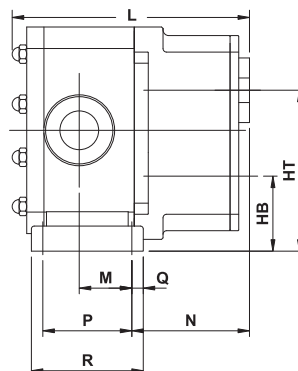
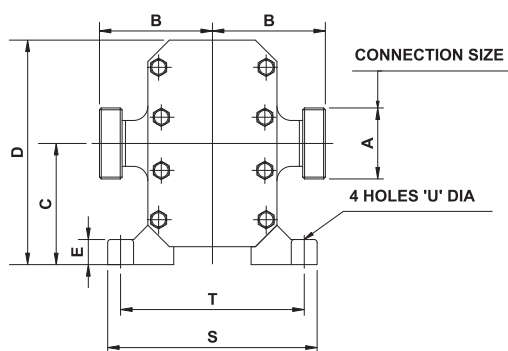
Stainless steel rotary tri lobe road tanker pumps. Applications include corn syrup, vegetable oils, dairy products, sugars, fruit juices, starches, chemicals and many more. 3A 02-10 validated. Also available on application with FDA or ATEX certification.



Highlights

- Universal and compact mounting.
- Lightweight to increase payload yet durable to withstand arduous road tanker environments and operating conditions.
- High efficiency with full bore port connections, minimises NPSHr and maximises the flow potential. Plus it increases the ability to pump highly viscous products which reduces discharge time to a minimum.
- Port size, thread & orientation options to suit your exact needs.
- Competitor interchangeable mounting plate enabling low switching costs.
- Wide range of front loading seals available for ease of maintenance.
- Bi directional.

IHP100 & IHP128 – Hygienic pumps for conveying of liquid material



B1: applies for all threaded connections except BSPT & NPT.
B2: applies for BSPT & NPT thread connections.

Disclaimer: Dimensions are for guidance only.
Please refer to our technical office if a certified drawing is required.

Dimensions (mm)

	IHP 100		IHP 128	
A	50	80	80	100
B1	117	131	135	
B2	139	149	163	178
C	142	157		
D	275	305		
E	22	29		
HB	88	97		
HS	88	100		
HT	196	217		
L	299	311		
M	42	62		
N	174	161		
P	90	124		
Q	14	14		
R	117	152		
S	222	243		
T	195	214		
U	11	13		
V	303	329		
W	330	358		
X	54	60		

Your advantages

- Low maintenance: *Fit and forget!*
- Optimised seal design and positioning enables the operator to clean the pump quickly and easily without the need for specialist tools.
- Regional support with our full & comprehensive well positioned partner network.
- 316L product wetted parts for peace of mind for hygienic compatibility.
- Suitable for both CIP/SIP and COP (Clean Out of Place).
- Pumps can be driven by either a close coupled hydraulic motor or via electric motor.

Operating range

Parameters	Unit	IHP100	IHP128
Displacement	l/rev	1.00	1.28
Max. capacity	m ³ /hr	58	77
Max. pressure	bar	10	12
Max. speed	rpm	1,000	1,000
Weight	kg	49	67
Max. port Ø	mm	80	100
Porting available	in	3"	3"/4"

GHH RAND Schraubenkompressoren GmbH
Customer Center Tanker Solutions
 Max-Planck-Ring 27 • 46049 Oberhausen, Germany
 Tel. +49 (0)208 9994-0 • Fax +49 (0)208 9994-179
 info_ghh-rand@irco.com • www.ghhrand.de

 **Ingersoll Rand**
 Industrial Technologies